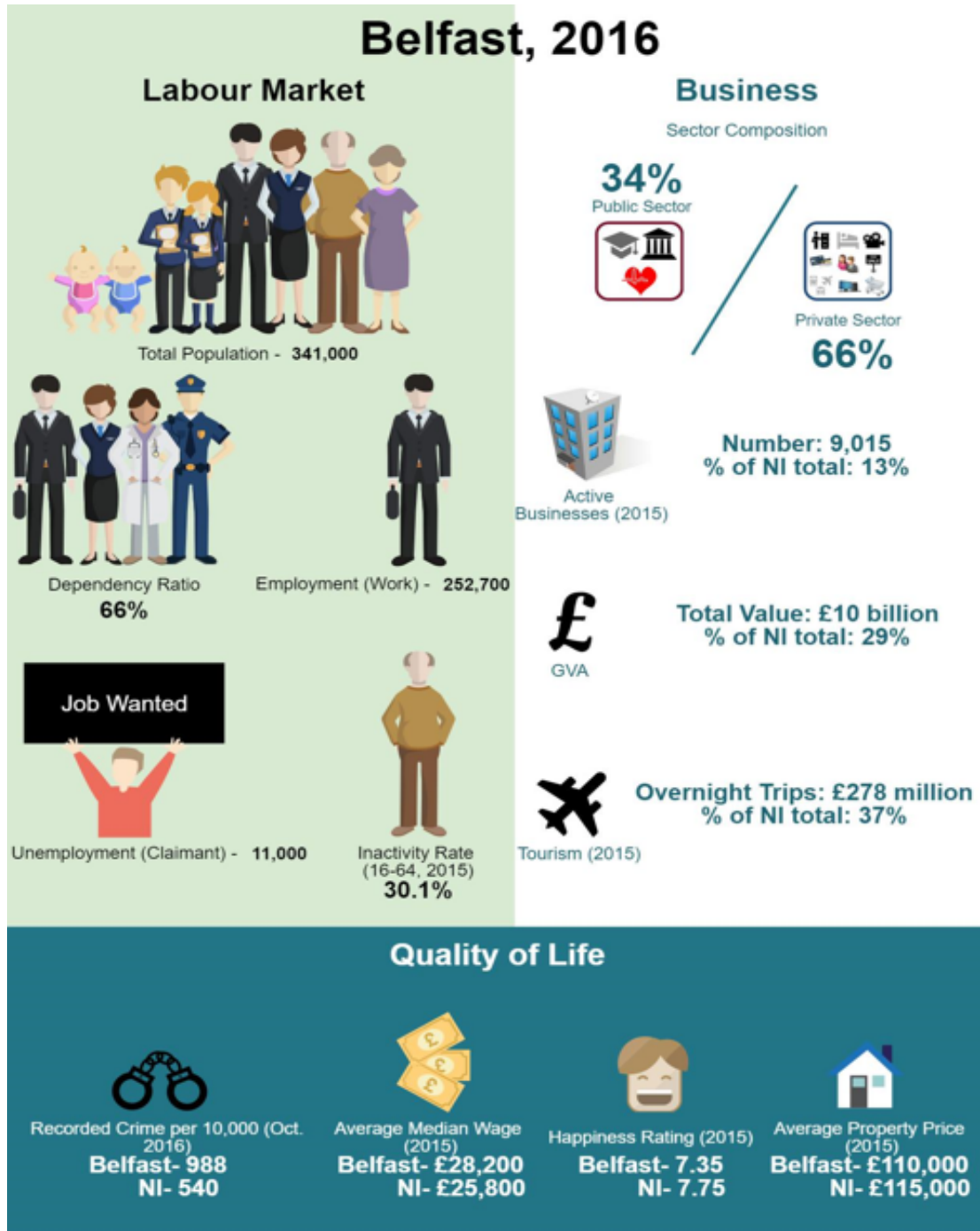


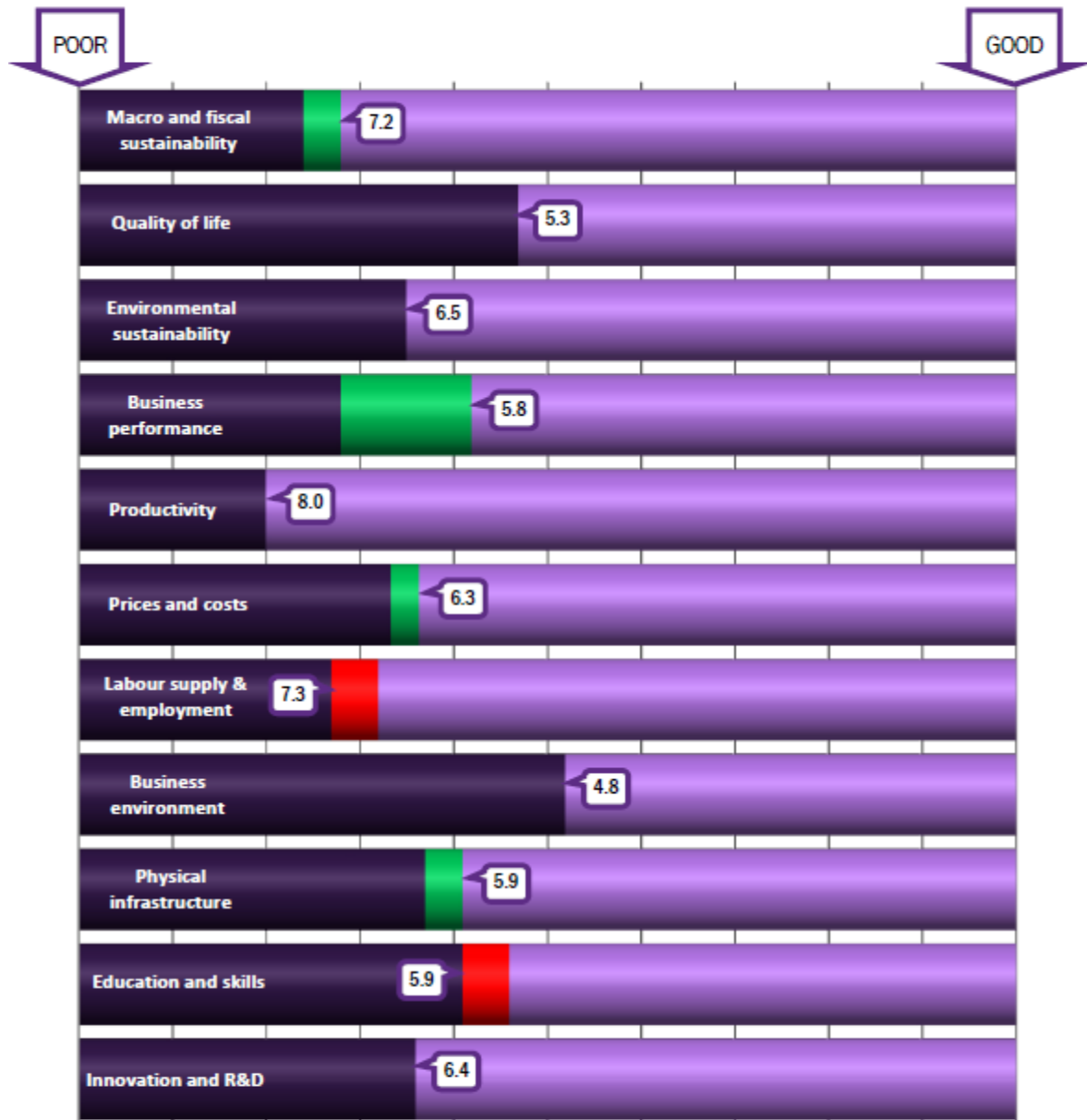
Appendix 1: Example Infographs and Data

Ulster University Economic Policy Centre: A Profile of Belfast (Winter 2016)



Note: population and labour market figures have been rounded to the nearest 1,000. Everything else has been rounded to the nearest 100

NI performance at a glance



The number shown is NI's current decile position – the lower the number, the more competitive we are. Green shows NI's relative improvement over the last five years - red indicates where we have become less competitive over the last five years.